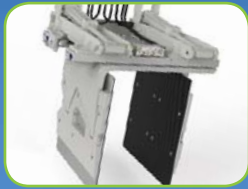
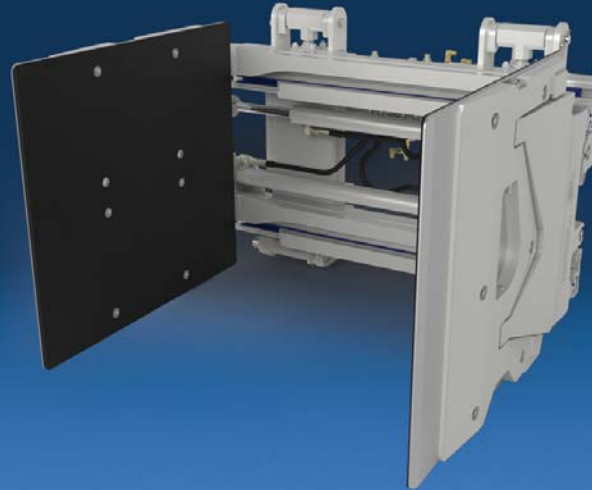


A tipping clamp designed for handling magnum and T loaded appliances in trailers



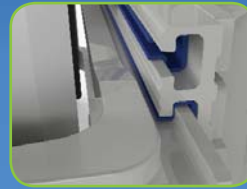
A forward tipping, articulating clamp for handling appliances



Easy access valve with built in clamp protection



True centering key for precise and secure mounting



Lube-free, full-length lip over UHMW bearings provide superior durability



Visibility through frame

APPLICATIONS

Designed for magnum and T loaded appliances in trailers. Articulating pads securely hold the load without damage. The sideshifting feature allows the operator to easily maneuver the product being handled.

FEATURES

Industry-leading visibility.

 **Efficient hydraulic system which minimizes energy consumption and maximizes performance.**

- Clamp and backhand protection.
 - Flow divider for equal arm movement.
 - Top-mounted hydraulic cartridges and test port for ease of access and adjustment.
 - Sideshift circuit relief optimizes sideshift speed and performance.
- Rugged design for optimal strength, durability and performance.**
- High strength steel frame and castings.
 - Lubrication-free, full length UHMW bearings.
 - Maximum clamp force for secure handling.
 - Cushion stop tipping cylinders for smooth operation.
 - Thin arm profile for manipulating tight loads between stacks.
 - Rubber-faced aluminum contact pads for secure handling of loads.

Designed for convenience and performance.

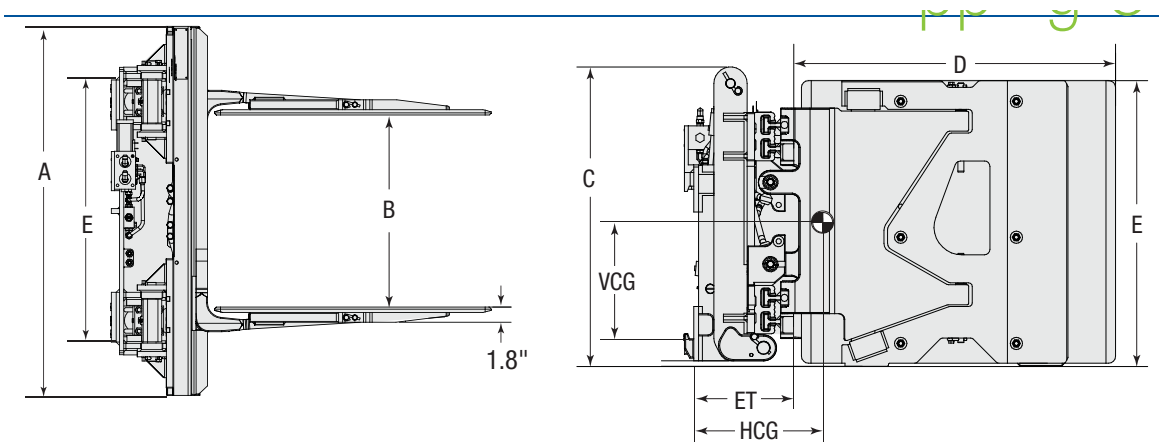
- Integrated true centering key for precise and secure installation.
- Solenoid adaption group included to allow an existing truck auxiliary function to control the tipping feature of the clamp.
- Available in two pressure offerings to match truck hydraulic system.

OPTIONS

- Custom opening ranges and frame widths.
- Custom arm lengths, heights and pad surfaces. Application-specific contact pads (sizes & surfaces).
- Frame bumper for extra protection when handling loose loads.
- Various ISO mounting options including class III and quick-disconnect features.
- Independent arm control.
- Regenerative valve for increased arm speed on low flow electric trucks.
- External sideshift available.
- Alternate valve configurations for left hand or right hand third and fourth function hydraulic installation.
- Application-specific customization.

DAMAGE REDUCTION OPTIONS:

- Load cushion™
- Tilt control.
- Four-point tester.
- Touch Force Control – TFC™



Catalog Order No.	Capacity@ 17" (432mm) Load Center		Frame Width		Opening Range	Solenoid Voltage	Mfg. Class	Hook Spread	Weight		Effective Thickness	Horizontal Ctr. of Gravity	Vertical Ctr. of Gravity	Overall Attachment Height	Useable Arm Length	Arm Height
	lbs	kg	A	B					lbs	kg						
Low Pressure - For trucks delivering up to 2,760 psi of operating pressure.																
8J-CCU-2A-0010	1,500	860	44.3"	23.2"-81.9"	①	12	II	32.0"	1,437	653	10.1"	13.4"	12.0"	32.0"	34.0"	30.0"
8J-CCU-2A-0020	1,500	860	44.3"	23.2"-81.9"	①	24	II	32.0"	1,437	653	10.1"	13.4"	12.0"	32.0"	34.0"	30.0"
8J-CCU-2A-0030	1,500	860	44.3"	23.2"-81.9"	①	36	II	32.0"	1,437	653	10.1"	13.4"	12.0"	32.0"	34.0"	30.0"
8J-CCU-2A-0040	1,500	860	44.3"	23.2"-81.9"	①	48	II	32.0"	1,437	653	10.1"	13.4"	12.0"	32.0"	34.0"	30.0"

High Pressure - For trucks delivering over 2,760 psi of operating pressure consult Cascade.

① Published opening range limits are nominal clamp dimensions only and clamp may not accommodate loads with same or close to same dimension. Consult Cascade for further assistance.

- ▶ All models include an integrated sideshift circuit.
- ▶ Standard valve configuration is with clamp ports on the right and sideshift on the left.

▶ This unit is solenoid equipped for the tipping function. A two-function hydraulic supply is required. The Sideshift and Clamp functions are actuated directly with the auxiliary valves. The tipping function is actuated by depressing the solenoid button and then actuating the sideshift valve. The Control Knob Kit with a push button or the Low Profile Switch Kit is included with the attachment. Please specify at time of order. Requires a four-way auxiliary valve on the truck, electrical cable or Power Cord, and Four Hose Installation Kit.

IMPORTANT: Solenoid voltage must match truck voltage. This unit is equipped with a 12-volt solenoid. If you require a different voltage, please specify at time of order.

Hydraulic Flow & Pressure – Hydraulic Functions

Model	Maximum Attachment Operating Pressure psi/bar	Maximum Deliverable Truck Pressure psi/bar	Attachment Pressure Protected Yes/No?	Min-Rec-Max Function 3 (sideshift) gpm	Min-Rec-Max Function 4 (clamp) gpm	Attachment Number of Functions	Truck Auxiliary Valves Required
8J Tipping Clamp	2,250/155	2760/190	Yes	1-5-10	5-12-16	3	2

▶ If the maximum deliverable truck pressure exceeds maximum clamp or rotate operating pressure and the attachment is not pressure protected, then auxiliary pressure protection is required.